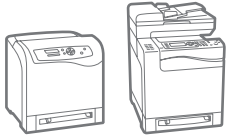


Phaser® 6500 and
WorkCentre™ 6505
A4
Colour Printer and
Colour Multifunction Printer



Xerox® Phaser® 6500 Colour Printer and WorkCentre™ 6505 Colour Multifunction Printer

The right colours, the easy way



Phaser® 6500 Colour Printer and WorkCentre™ 6505 Colour Multifunction Printer

The right solution for today's pace of business. Your busy workteam needs a value-packed colour device that gets the job done with the rare combination of outstanding print quality, unparalleled simplicity, and day-in, day-out dependability. Introducing the Phaser 6500 and WorkCentre 6505.



The colours your business needs

The Phaser 6500 colour printer and WorkCentre 6505 colour multifunction printer give your important documents a powerful, colourful boost.

- **Outstanding print quality.** A print resolution of up to 600 × 600 × 4 dpi makes your printed communications stand out and grab attention.
- **True Adobe® PostScript® 3™.** Count on consistently precise print jobs with bright, true colours and superior graphics.
- **Advanced toner technology.** Xerox-exclusive EA Toner uses particles engineered for uniform size and shape, producing superior image detail and line definition, and text that's sharp and clear.
- **Always the right colour.** PANTONE® Colour approved solid-colour simulations and Xerox colour correction technology ensure results that match your expectations.

Ready to help

We designed the Phaser 6500 and WorkCentre 6505 as simple colour devices that support single users and small workteams.

- **Print and go.** Work quickly with print speeds of up to 23 ppm for colour and black and white.
- **More productivity for more people.** Connect and go, thanks to built-in networking and seamless compatibility with mixed-user environments, including PC, Macintosh and Linux.
- **Easy management.** With Xerox CentreWare® IS, remote device administration is handled with ease right from your computer's browser.
- **Out of colour toner?** Our Run Black feature lets you continue printing with black until you can replace toner.
- **Total peace of mind.** Our standard one-year on-site warranty.

Easy on your environment

The Phaser 6500 and WorkCentre 6505 help you meet today's environmental challenges.

- **Print more, use less.** Whether you choose manual two-sided printing or upgrade to convenient automatic duplexing, you'll conserve paper for reduced costs and lowers environmental impact.
- **Toner-only cartridges.** With minimal packaging, our toner-only cartridges allow for 80% less waste than comparable colour devices using integrated print cartridges.
- **A perfect fit.** Both devices feature a small footprint, which allows for easy integration within your work space, whether on your desk or in a shared location.
- **The quiet partner.** Engineered for extra-quiet operation to minimise impact on busy offices.
- **Consolidate and save.** The value-packed WorkCentre 6505 multifunction printer will save on energy and supplies costs by combining the functions of multiple devices into one.

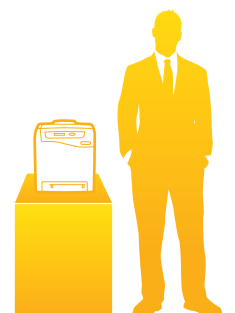
Phaser® 6500 Quick Facts

- Print up to 23 ppm colour and black and white
- 600 × 600 × 4 dpi
- Optional automatic two-sided printing*
- Powerful 400 MHz processor
- Robust 40,000 pages/month duty cycle
- 256 MB memory, expandable to 768 MB
- First page out time of 13 seconds colour, 12 seconds black and white

* Standard on DN configuration



WxDxH:
404 × 426 × 416 mm



Productivity, accelerated. The WorkCentre 6505 colour multifunction printer builds on the outstanding print performance found in the Phaser 6500, delivering a host of powerful productivity tools designed to make your daily office tasks more efficient than ever.

1

The WorkCentre 6505 includes an intuitive front panel for configuring device settings and programming jobs.

2

A 35-sheet automatic document feeder handles media sizes from 139.7 × 139.7 mm to 216 × 356 mm

3

A front-side USB port allows users to quickly print from or scan to any standard USB memory device.

4

Powerful scanning capabilities include Scan to Email, Network Scanning, Direct Scan to Applications including Optical Character Recognition, and Scan to USB memory device.

5

Standard copy features include ID Card Copy, N-up, auto fit, cloning, collate and more.

6

Send faxes from the network using LAN Fax, or take advantage of full walkup fax features such as speed dial, remote receive and fax broadcast.

7

A standard 533 MHz processor and 256 MB memory (expandable to 768 MB) let the WorkCentre 6505 easily handle a heavy workload – even a steady stream of pages with graphics, photos and charts.

8

Optional 250-sheet paper tray increases capacity to 500 sheets – enough to load a full ream of paper.



WorkCentre™ 6505 Quick Facts

- Print up to 23 ppm colour and black and white
- 600 × 600 × 4 dpi
- Optional automatic two-sided printing*
- Powerful 533 MHz processor
- Robust 40,000 pages/month duty cycle
- 256 MB memory, expandable to 768 MB
- First page out time of 12 seconds colour, and black and white

* Standard on DN configuration



Copy / Print / Scan /
Fax / Email



A4



23 ppm

WxDxH:
430 × 544 × 584 mm



Phaser® 6500 and WorkCentre™ 6505

	Phaser 6500N	Phaser 6500DN	WorkCentre 6505N	WorkCentre 6505DN
Speed	Up to 23 ppm colour and black and white			
Duty Cycle	Up to 40,000 pages / month ¹			
Paper Handling Paper input	Standard	NA		Automatic Document Feeder (ADF): 35 sheets: Custom Sizes: 139.7 × 139.7 mm to 216 × 356 mm
		Manual Feed Slot: 1 sheet; Custom sizes: 76 × 127 mm to 216 × 356 mm		
	Optional	Tray 1: 250 sheets; Custom sizes: 76 × 127 mm to 216 × 356 mm		
		Tray 2: 250 sheets; Custom sizes: 148 × 210 mm to 216 × 356 mm		
Paper output	150 sheets face down			
Automatic two-sided printing	Optional	Standard	Optional	Standard
Print First-page-out-time	As fast as 13 seconds colour / 12 seconds black and white		As fast as 12 seconds colour / 12 seconds black and white	
Resolution (max)	Up to 600 × 600 × 4 dpi			
Processor	400 MHz		533 MHz	
Memory (std / max)	256 MB / 768 MB			
Connectivity	USB 2.0, 10/100 Base-TX Ethernet			
Page description languages	Adobe® PostScript® 3™, PCL® 6 emulation			
Print features Standard	PANTONE® Colour approved solid-colour simulations, N-up, Fit to page, Booklet printing, Skip blank pages, Run black, Covers/Separators ² , Poster printing ² , Watermarks ² , Overlays ² , Banner sheets ² , Draft mode ²			
	Optional ³	Secure print, Proof print, Personal print, Saved print, RAM collation		
Copy First-copy-out-time	NA		As fast as 20 seconds colour / 13 seconds black and white	
Copy resolution	NA		600 × 600 dpi	
Copy features	NA		1 sided to 2 sided copying ⁴ , Reduce/enlarge (25%-400%), N-up copying, Auto fit, Cloning, Collation, ID Card Copy, Edge erase	
Fax Fax features ⁵	NA		33.6 Kbps with MH/MR/MMR/JBIG/JPEG compression, Secure fax receive ⁴ , Lighter / darker, Polling, Remote receive (with external phone), Junk fax protection, Fax forwarding, Delay send, Broadcast, Address book (up to 200 speed dials, 6 group dials), Resolution up to 400 × 400 dpi, LAN Fax (Send)	
Scan Scan destinations	NA		Scan to Email (local address book or LDAP integration), Network Scanning via FTP (server) and SMB (server or computer), Direct Scan to Applications including OCR, USB Memory Device	
	Scan features	Up to 1200 × 1200 dpi resolution, 24-bit colour / 8-bit greyscale, PDF / JPEG / TIFF (single and multi-page) / XDW		
Security	Secure HTTPS (SSL), IPsec, 802.1x Authentication, IPv6, SNMPv3, Audit Log, IP Filtering			
Warranty	One-year on-site warranty			

¹ Maximum volume capacity expected in any one month. Not expected to be sustained on a regular basis; ² Accessed via PCL driver; ³ Requires optional Productivity Kit with 512 MB memory; ⁴ requires DN model or optional duplex unit; ⁵ Analogue phone line required

Device Management

CentreWare® Internet Services, CentreWare Web, PrintingScout™, Email alerts, Apple® Bonjour

Print Drivers

Windows® XP, Vista, Server 2003, Server 2008, 7; Mac OS® version 10.5 and higher; Linux, Xerox Global Print Driver®, Xerox Mobile Express Driver™

Media Handling

Automatic Document Feeder*: 50 – 125 g/m²; Manual Feed Slot and Trays: 60 – 216 g/m²; Media types: Plain paper, glossy, business cards, envelopes, labels, cardstock

Operating Environment

Temperature: Storage: -20° to 40° C; Operating: 10° to 32° C; Humidity: 10% to 85%; Sound pressure levels: 6500: Printing (Enhanced): 53 dB(A), Standby: 25 dB(A); 6505: Printing (Enhanced): 52 dB(A), Standby: 22 dB(A); Sound power levels: Printing (Enhanced): 6500: 6.73 B, Standby: 3.86 B; 6505: 6.63 B, Standby: 3.65 B; Warm-up time (from sleep mode): as fast as 31 seconds

Electrical

Power: 110-127 VAC, 50/60 Hz or 220-247 VAC, 50/60 Hz; Power consumption: 6500: Standby: 55 W, Printing: 375 W, Sleep: 15 W; 6505: Standby: 65 W, Printing: 425 W, Sleep: 18.4 W; ENERGY STAR® qualified

Dimensions (WxDxH)

6500N/DN: 403.5 × 425.5 × 415.6 mm; Weight: 6500N: 18.2 kg; 6500DN: 19.4 kg; 250-sheet feeder: 400 × 457 × 107 mm; Weight: 4.4 kg; 6505N/DN: 430 × 544.2 × 584.4 mm; Weight: 6505N: 28.4 kg; 6505DN: 29.6 kg; 250-sheet feeder: 419.2 × 518 × 107 mm; Weight: 4.5 kg

Certifications

FCC Part 15, Class B, FCC Part 686, UL 60950-1/CSA 60950-1-07, 2nd Edition, CE Mark applicable to Low Voltage Directive (2006/95/EC), EMC Directive (2004/108/EC), and R&TTE Directive (1999/5/EC) 6, GOST, NOM, GS Mark, Citrix Ready, Section 508 (compliant with minor exceptions), ENERGY STAR® qualified

Supplies

High-capacity Print Cartridges*:	
Black: 3,000 std. pages	106R01604
Cyan: 2,500 std. pages	106R01601
Magenta: 2,500 std. pages	106R01602
Yellow: 2,500 std. pages	106R01603
Standard-capacity Print Cartridges*:	
Cyan: 1,000 std. pages	106R01598
Magenta: 1,000 std. pages	106R01599
Yellow: 1,000 std. pages	106R01600
Options	
250-sheet feeder for Phaser 6500	097S04070
250-sheet feeder for WorkCentre 6505	097S04264
Productivity Kit	097S04269
Duplex unit	097S04069
Wireless network adapter	
– European power converter**	097S03741
– UK power converter	097S03742

* Average standard pages. Declared Yield in accordance with ISO/IEC 19798. Yield will vary based on image, area coverage and print mode.

** Not available in Denmark and Switzerland

www.xerox.com

